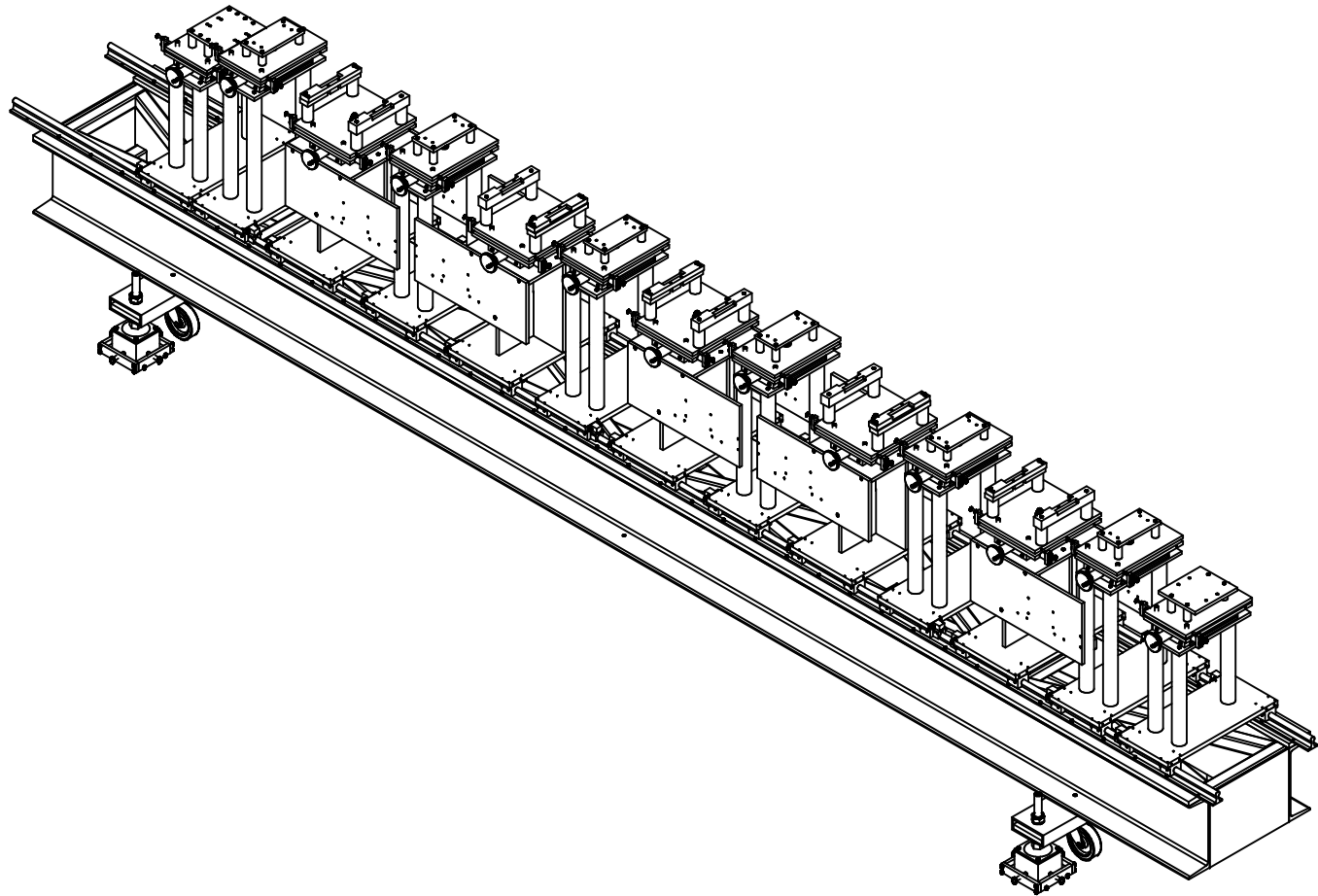
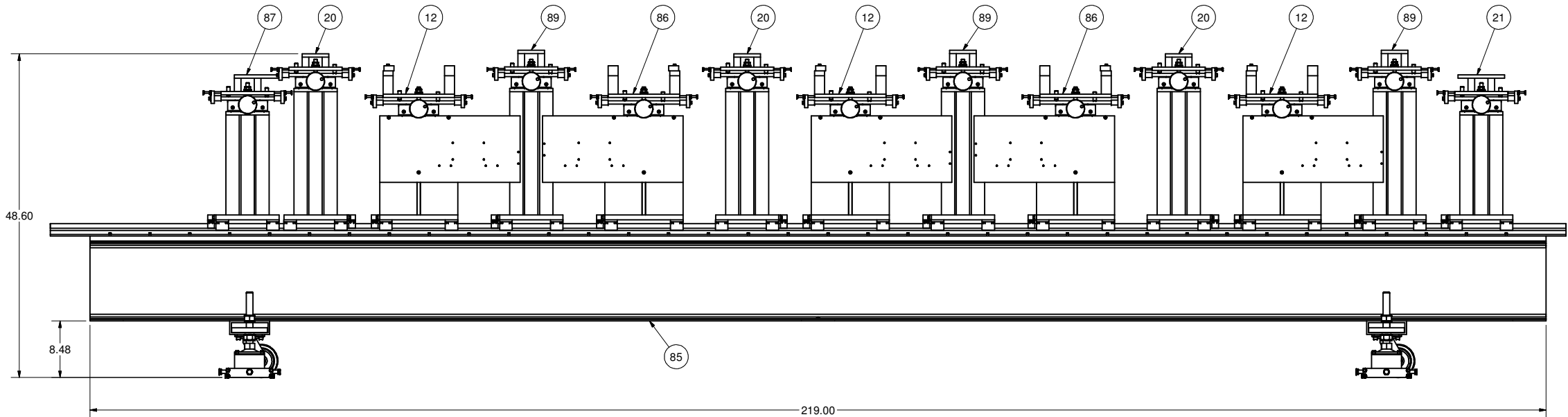
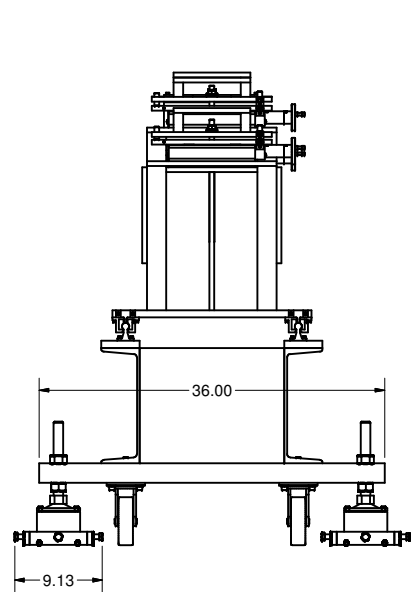


REVISIONS				
SYM.	ZONE	DESCRIPTION	DATE	APP.
A		New sheet.	12/04/07	VM




100 5-CELL CAVITY STRING ASSEMBLY FIXTURE, ASSEMBLY
FILE NAME: 7102-071
SHEET NO.: 16
DFT. SCALE: 1:10
MATERIAL:
QTY: 1 PER CRYOMODULE
NOTES: 1. ALL DIMENSIONS FOR REFERENCE ONLY.

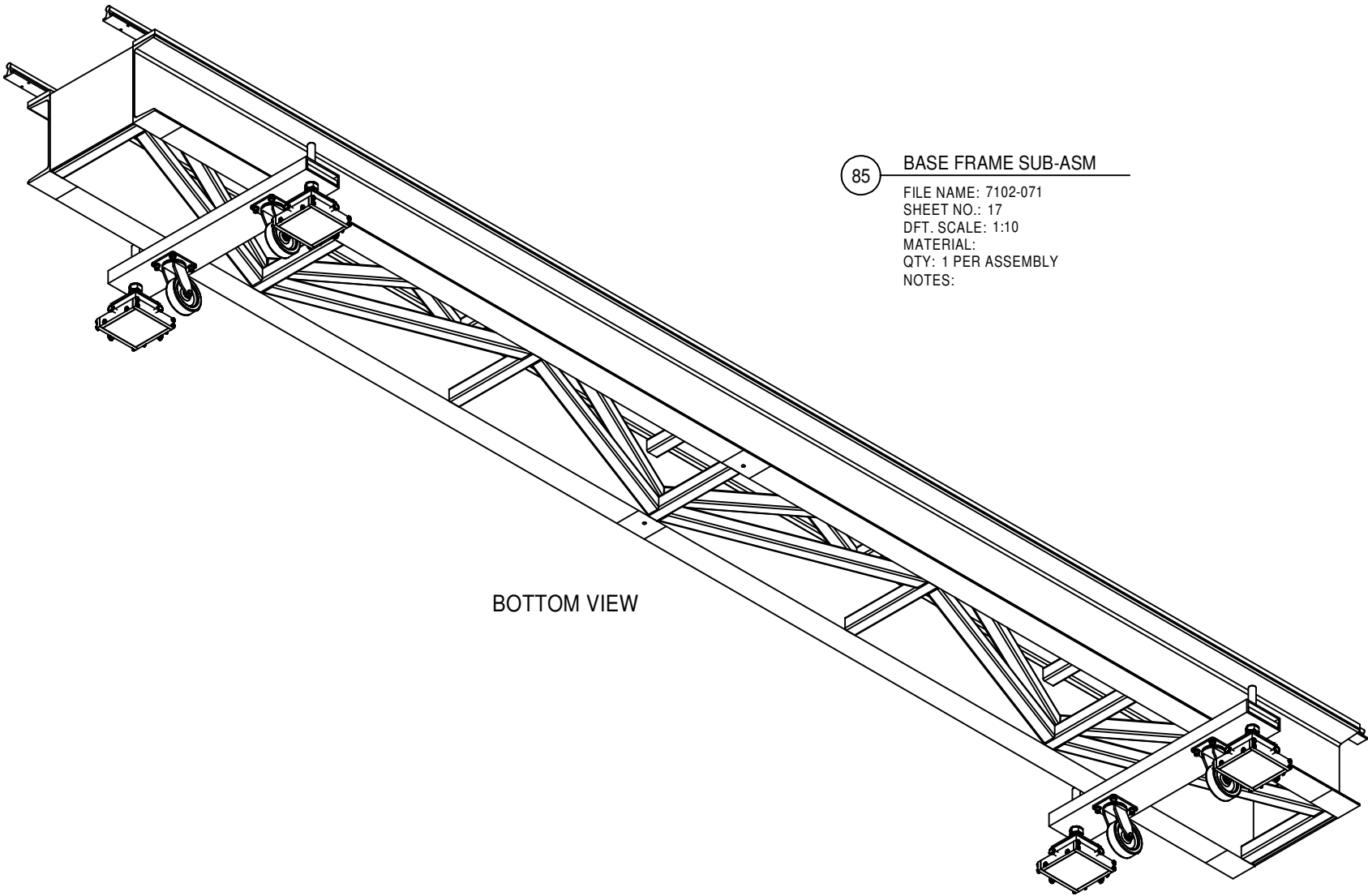
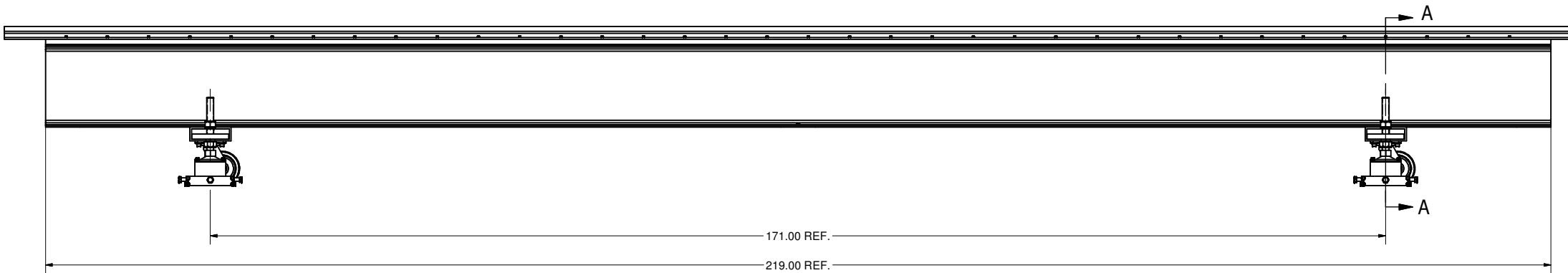
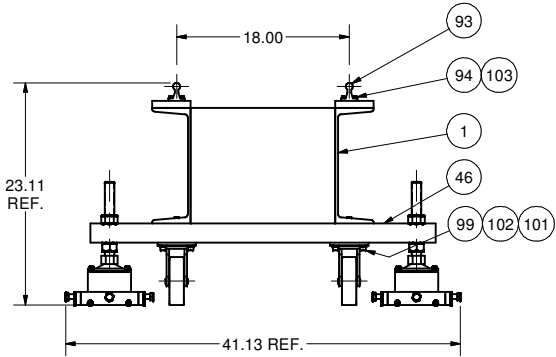
89	7102-071 (Sh.19)	HOM-78 PEDESTAL SUB-ASM	3					
87	7102-071 (Sh.20)	GATE VALVE PEDESTAL AT BEAM ENTRANCE, SUB-ASM	1					
86	7102-071 (Sh.18)	CAVITY PEDESTAL LEFT, SUB-ASM	2					
85	7102-071 (Sh.17)	BASE FRAME SUB-ASM	1					
21	7102-071 (Sh.8)	GATE VALVE PEDESTAL AT BEAM EXIT, SUB-ASM	1					
20	7102-071 (Sh.8)	HOM-106 PEDESTAL SUB-ASM	3					
12	7102-071 (Sh.6)	CAVITY PEDESTAL RIGHT, SUB-ASM	3					
100	7102-071 (Sh.16)	5-CELL CAVITY STRING ASSEMBLY FIXTURE, ASSEMBLY	X					

FOR MACHINING LUBRICANT USE ONLY
ALKALINE DETERGENT LUBRICANT CIMSTAR 40
OR EQUIVALENT APPROVED BY CORNELL LEPP

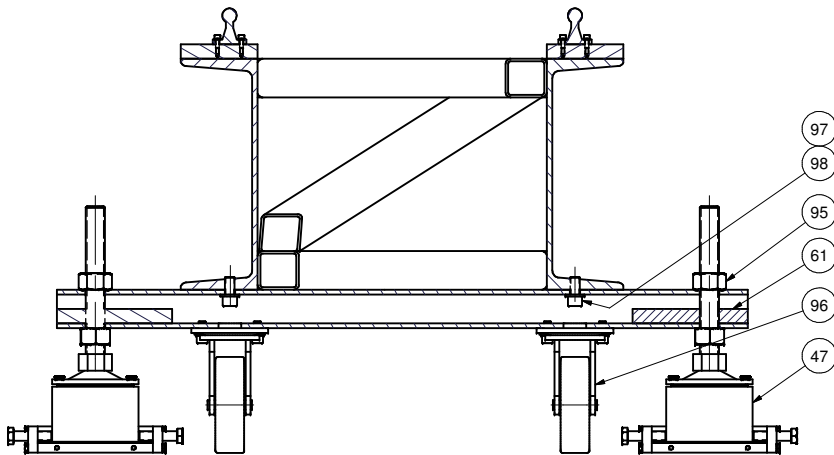
TECHNICAL RESOURCE APPROVALS REQUIRED BEFORE FABRICATION			
	OK	DATE	N/A
DRAFTING (O'Connel):			
MACHINE SHOP (Kaminski):			
CHEMISTRY (Conklin):			
ELECTRONICS SHOP (Barley):			
FURNACE BRAZING (Sherwood):			
BEAM WELDING (Sears):			
WELDING OTHER (Gallagher):			
UTILITIES INTEGRATION (Gallagher):			
STOCKROOMS (Lockwood):			

		ITEM	DWG. NO.	DESCRIPTION			G1	G2	G3	REMARKS		REV.	
								QUANTITY					
D		PLOT DATE: 12/11/2007 CAD FILE NAME: 7102-071.idw											
7102-071 SH. NO. 16 OF 20		CR-1	UNLESS OTHERWISE SPECIFIED: DIMENSIONS ARE IN INCHES: TOLERANCES ON: 0.0 ± .02 0.00 ± .01 0.000 ± .005 FRACTIONS ± 1/64 ANGLES ± 0.5° ALL SURFACES ✓		<div>CORNELL UNIVERSITY  LEPP</div> <div>CORNELL UNIVERSITY Floyd R. Newman Laboratory Ithaca, NY 14853</div> <div>LABORATORY FOR ELEMENTARY-PARTICLE PHYSICS</div>								
				ERL INJECTOR CRYOMODULE 5-CELL CAVITY STRING ASSEMBLY FIXTURE 5-CELL CAVITY STRING ASSEMBLY FIXTURE, ASSEMBLY									
A		CHECKED BY: PEB/NGV APPROVED BY: PEB/NGV		DRAWN BY JGL		DRAWN FOR P. Barnes		DATE 2/1/2007		SCALE D		7102-071 SH. NO. 16 OF 20	REV. A

REVISIONS				
SYM.	ZONE	DESCRIPTION	DATE	APP.
A		New sheet.	12/04/07	VM



85 BASE FRAME SUB-ASM
FILE NAME: 7102-071
SHEET NO.: 17
DFT. SCALE: 1:10
MATERIAL:
QTY: 1 PER ASSEMBLY
NOTES:



SECTION A-A
SCALE 1:5

103	Purchased	#10 Spring Lock Washer	144			St. Steel	
102	Purchased	3/8 Spring Lock Washer	16			St. Steel	
101	Purchased	3/8 Washer	16			St. Steel	
99	Purchased	3/8-24 x 3/4 Socket Hd. Cap Screw	16			St. Steel	
98	Purchased	1/2-20 x 1 Socket Head Cap Screw	4			St. Steel	
97	Purchased	1/2 Spring Lock Washers	4			St. Steel	
96	Purchased	Caster	4				
95	Purchased	1-8 Hex Nut	4			St. Steel	
94	Purchased	10-32 x 1/2 Socket Head Cap Screw	144			St. Steel	
93	Purchased	Thomson Rail Assembly SRA-12-SM-L228	2				
61	7102-071 (Sh.10)	Leveler Nut	4				
47	7102-071 (Sh.11)	Cart Foot Adjustment Assembly	4				
46	7102-071 (Sh.3)	Caster Leveler Beam	2				
1	7102-071 (Sh.1)	Base Structure Weldment	1				
85	7102-071 (Sh.17)	BASE FRAME SUB-ASM	X				

ITEM	DWG. NO.	DESCRIPTION	G1	G2	G3	REMARKS	REV.
			QUANTITY				

FOR MACHINING LUBRICANT USE ONLY
ALKALINE DETERGENT LUBRICANT CIMSTAR 40
OR EQUIVALENT APPROVED BY CORNELL LEPP

TECHNICAL RESOURCE APPROVALS REQUIRED BEFORE FABRICATION			
	OK	DATE	N/A
DRAFTING (O'Connell):			
MACHINE SHOP (Kaminski):			
CHEMISTRY (Conklin):			
ELECTRONICS SHOP (Barley):			
FURNACE BRAZING (Sherwood):			
BEAM WELDING (Sears):			
WELDING OTHER (Gallagher):			
UTILITIES INTEGRATION (Gallagher):			
STOCKROOMS (Lockwood):			

7102-071
SH. NO. 17 OF 20
REV. A

PRINT DISTR. CR-1
PLOT DATE: 12/11/2007
CAD FILE NAME: 7102-071.idw

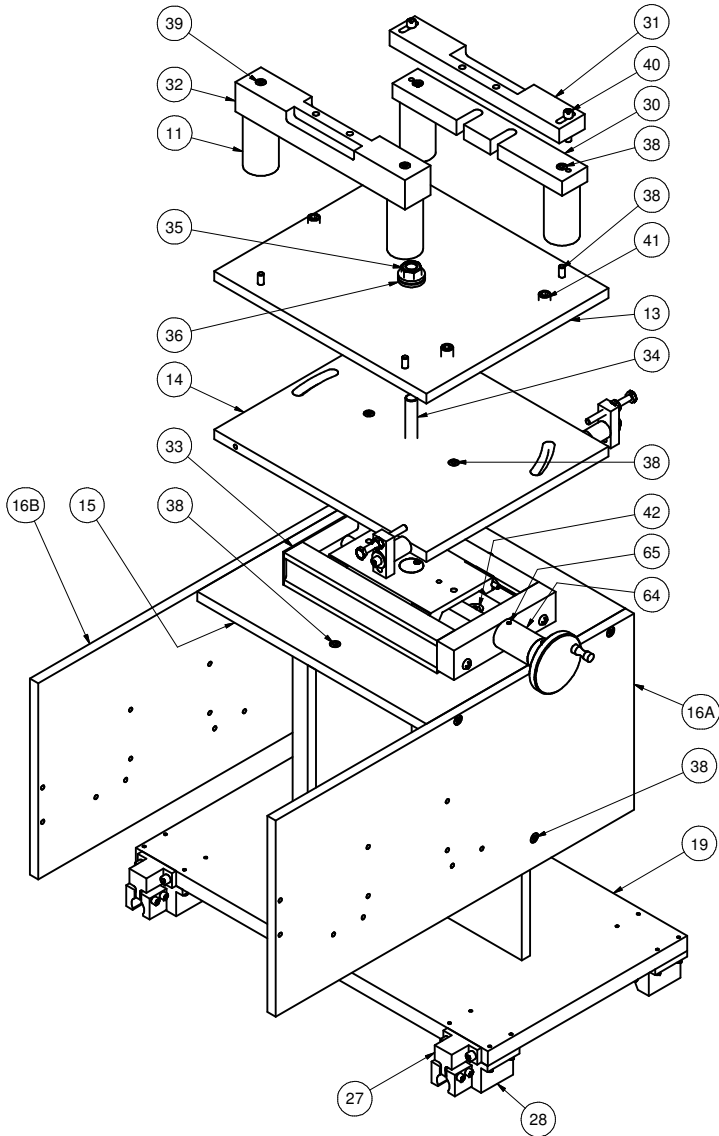
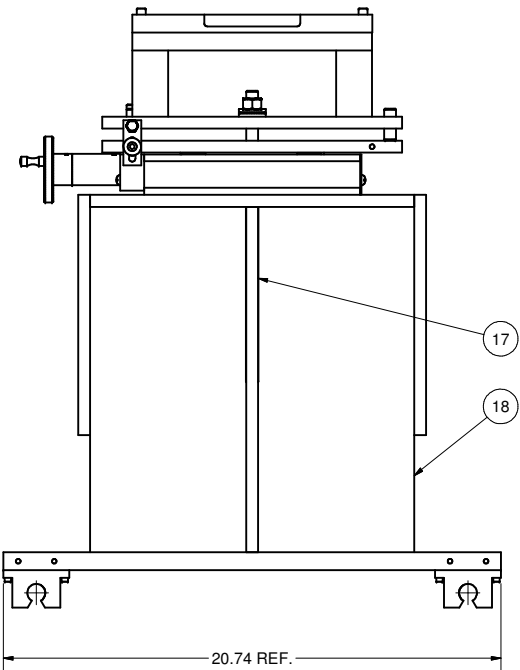
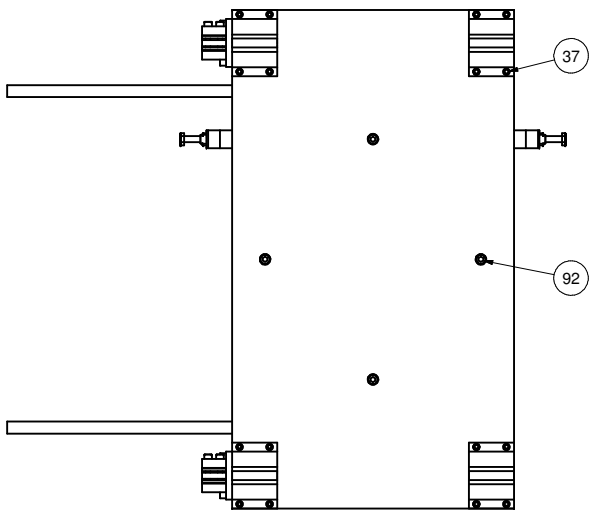
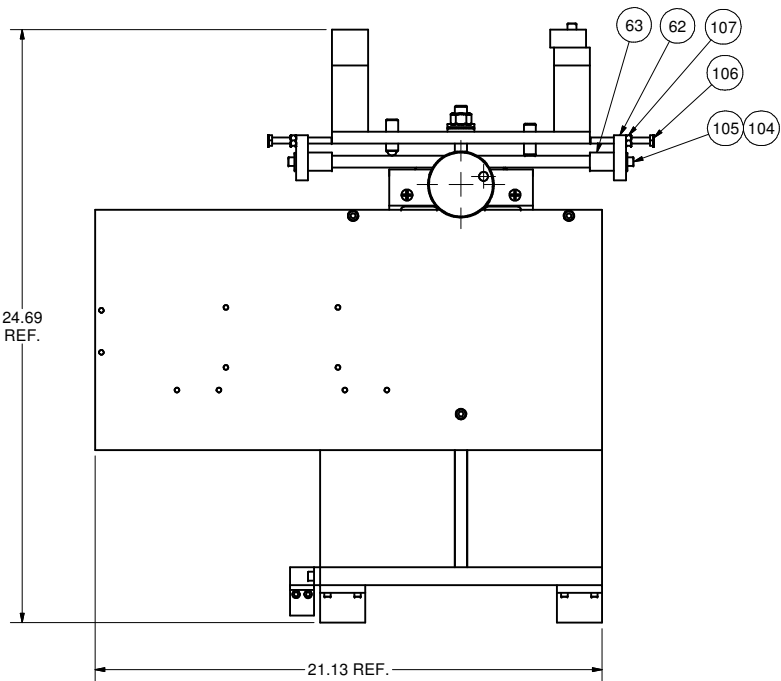
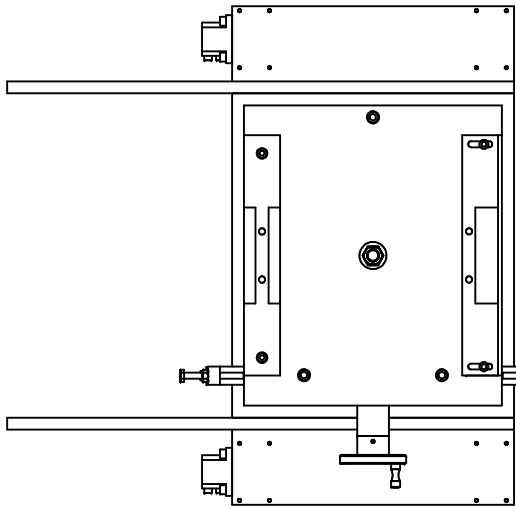
UNLESS OTHERWISE SPECIFIED:
DIMENSIONS ARE IN INCHES:
TOLERANCES ON:
0.0 ± .02
0.00 ± .01
0.000 ± .005
FRACTIONS ± 1/64
ANGLES ± 0.5°
ALL SURFACES

CORNELL UNIVERSITY
FLOYD R. NEWMAN LABORATORY
ITHACA, NY 14853

ERL INJECTOR CRYOMODULE
5-CELL CAVITY STRING ASSEMBLY FIXTURE
BASE FRAME SUB-ASM

CHECKED BY: PEB/NGV	DRAWN BY: JGL	DRAWN FOR: P. Barnes	DATE: 2/1/2007	SCALE: D	7102-071 SH. NO. 17 OF 20	REV. A
APPROVED BY: PEB/NGV						

REVISIONS				
SYM.	ZONE	DESCRIPTION	DATE	APP.
A		New sheet.	12/04/07	VM




86 CAVITY PEDESTAL LEFT, SUB-ASM

FILE NAME: 7102-071
SHEET NO.: 18
DFT. SCALE: 1:4
MATERIAL:
QTY: 2 PER ASSEMBLY
NOTES:

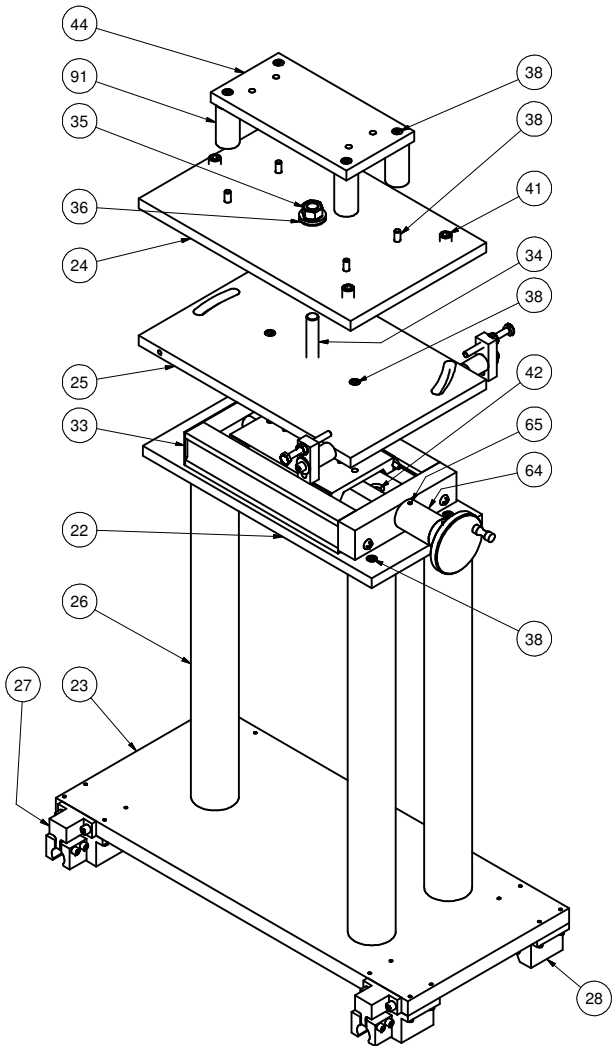
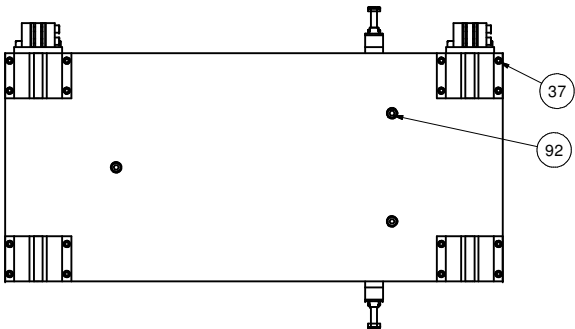
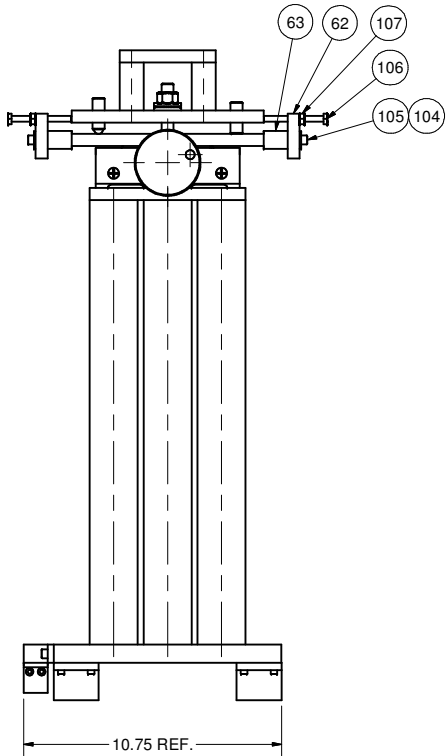
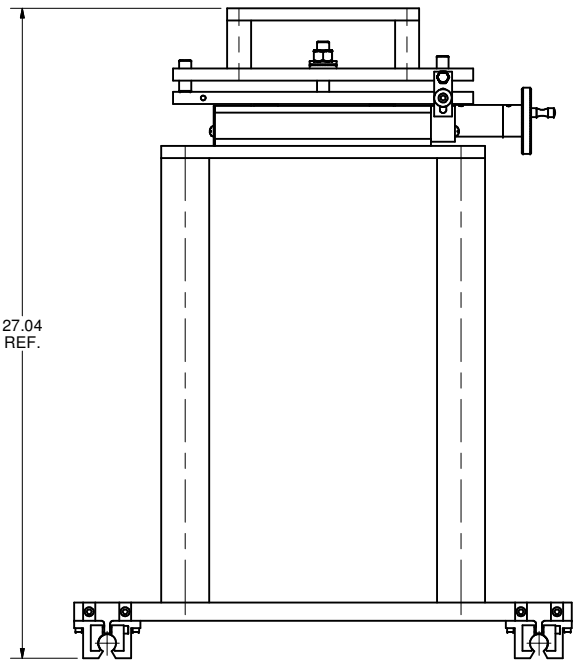
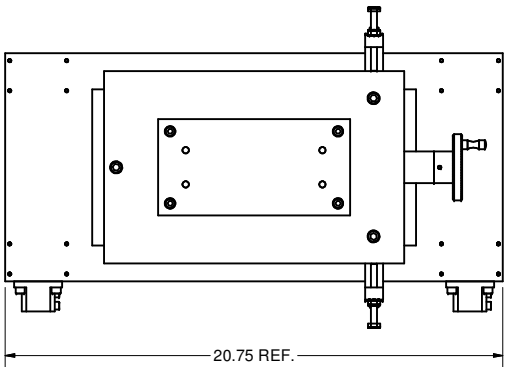
FOR MACHINING LUBRICANT USE ONLY
ALKALINE DETERGENT LUBRICANT CIMSTAR 40
OR EQUIVALENT APPROVED BY CORNELL LEPP

TECHNICAL RESOURCE APPROVALS REQUIRED BEFORE FABRICATION			
	OK	DATE	N/A
DRAFTING (O'Connell):			
MACHINE SHOP (Kaminski):			
CHEMISTRY (Conklin):			
ELECTRONICS SHOP (Barley):			
FURNACE BRAZING (Sherwood):			
BEAM WELDING (Sears):			
WELDING OTHER (Gallagher):			
UTILITIES INTEGRATION (Gallagher):			
STOCKROOMS (Lockwood):			

PRINT DISTR.	CR-1	7102-071	REV. A
-----------------	------	----------	-----------

ITEM	DWG. NO.	DESCRIPTION	G1	G2	G3	REMARKS	REV.
			QUANTITY				
PLOT DATE: 12/11/2007							
CAD FILE NAME: 7102-071.idw							
UNLESS OTHERWISE SPECIFIED: DIMENSIONS ARE IN INCHES; TOLERANCES ON: 0.0 ± .02 0.00 ± .01 0.000 ± .005 FRACTIONS ± 1/64 ANGLES ± 0.5° ALL SURFACES ✓		 CORNELL UNIVERSITY LEPP LABORATORY FOR ELEMENTARY-PARTICLE PHYSICS		CORNELL UNIVERSITY Floyd R. Newman Laboratory Ithaca, NY 14853			
		ERL INJECTOR CRYOMODULE					
		5-CELL CAVITY STRING ASSEMBLY FIXTURE					
		CAVITY PEDESTAL LEFT, SUB-ASM					
CHECKED BY: PEB/NGV	DRAWN BY: JGL	DRAWN FOR: P. Barnes	DATE: 2/1/2007	SCALE: D	7102-071		REV. A
APPROVED BY: PEB/NGV					SH. NO. 18 OF 20		

REVISIONS				
SYM.	ZONE	DESCRIPTION	DATE	APP.
A		New sheet.	12/04/07	VM



89 HOM-78 PEDESTAL SUB-ASM

FILE NAME: 7102-071
SHEET NO.: 19
DFT. SCALE: 1:4
MATERIAL:
QTY: 3 PER ASSEMBLY
NOTES:

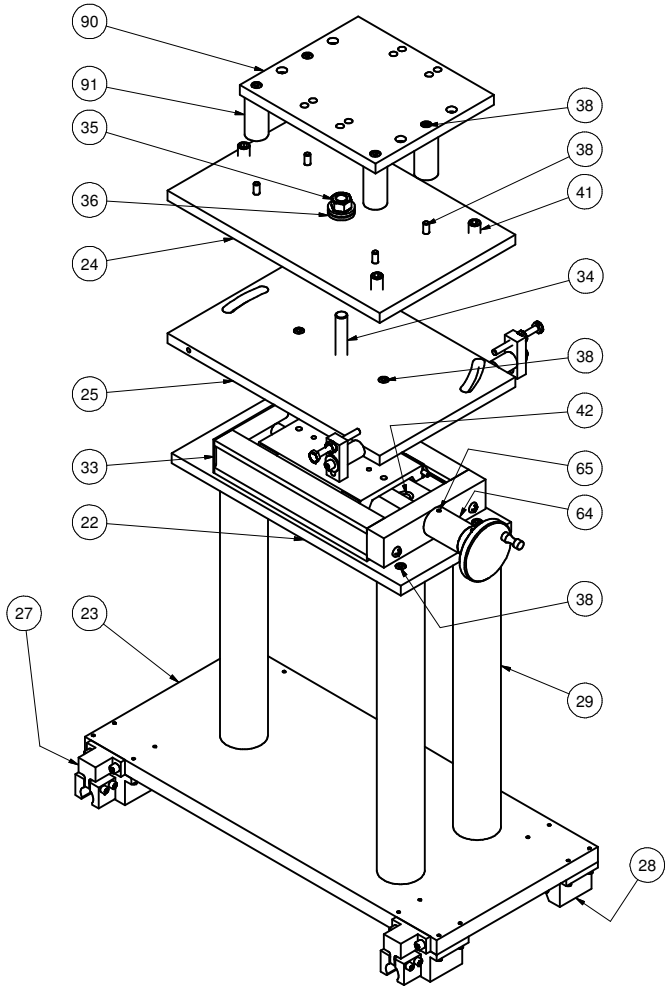
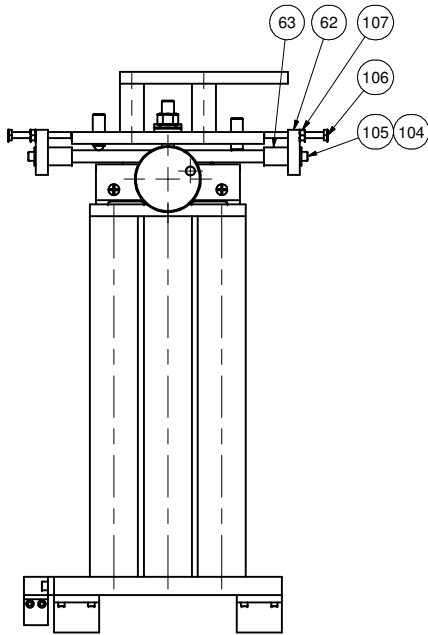
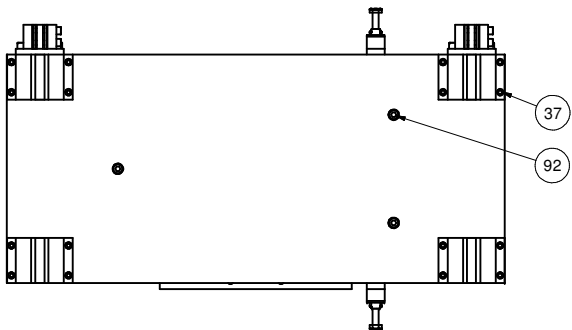
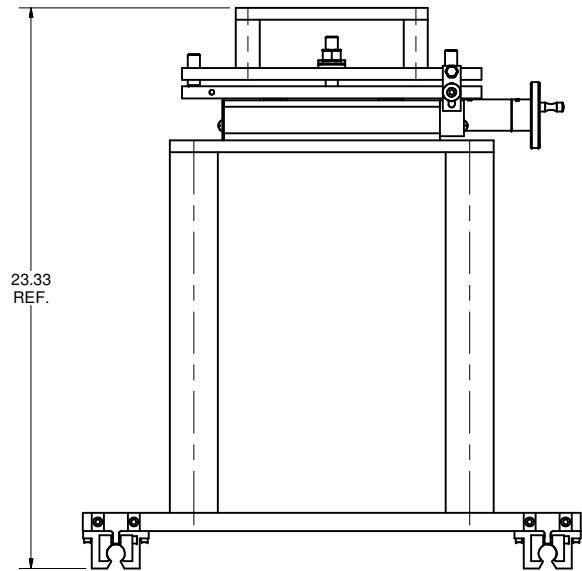
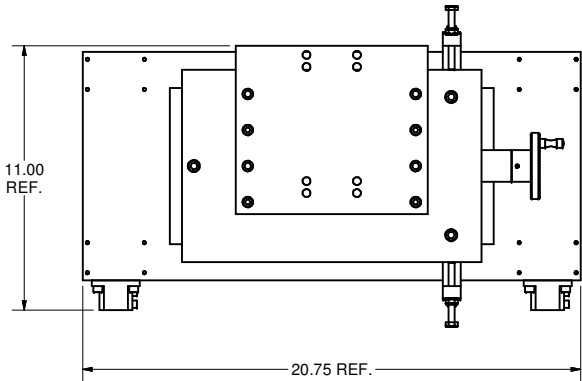
FOR MACHINING LUBRICANT USE ONLY
ALKALINE DETERGENT LUBRICANT CIMSTAR 40
OR EQUIVALENT APPROVED BY CORNELL LEPP

TECHNICAL RESOURCE APPROVALS REQUIRED BEFORE FABRICATION			
	OK	DATE	N/A
DRAFTING (O'Connell):			
MACHINE SHOP (Kaminski):			
CHEMISTRY (Conklin):			
ELECTRONICS SHOP (Barley):			
FURNACE BRAZING (Sherwood):			
BEAM WELDING (Sears):			
WELDING OTHER (Gallagher):			
UTILITIES INTEGRATION (Gallagher):			
STOCKROOMS (Lockwood):			

ITEM	DWG. NO.	DESCRIPTION	G1	G2	G3	REMARKS	REV.
7102-071							

PLOT DATE: 12/11/2007 CAD FILE NAME: 7102-071.idw		UNLESS OTHERWISE SPECIFIED: DIMENSIONS ARE IN INCHES: TOLERANCES ON: 0.0 ± .02 0.00 ± .01 0.000 ± .005 FRACTIONS ± 1/64 ANGLES ± 0.5° ALL SURFACES		CORNELL UNIVERSITY FLOYD R. NEWMAN LABORATORY ITHACA, NY 14853	
ERL INJECTOR CRYOMODULE 5-CELL CAVITY STRING ASSEMBLY FIXTURE HOM-78 PEDESTAL SUB-ASM		DRAWN BY JGL		DRAWN FOR P. Barnes	
CHECKED BY: PEB/NGV APPROVED BY: PEB/NGV		DATE 2/1/2007		SCALE D	
		7102-071 SH. NO. 19 OF 20		REV. A	

REVISIONS				
SYM.	ZONE	DESCRIPTION	DATE	APP.
A		New sheet	12/04/07	VM

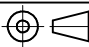





87 GATE VALVE PEDESTAL AT BEAM ENTRANCE, SUB-ASM

FILE NAME: 7102-071
SHEET NO.: 20
DFT. SCALE: 1:4
MATERIAL:
QTY: 1 PER ASSEMBLY
NOTES:

FOR MACHINING LUBRICANT USE ONLY
ALKALINE DETERGENT LUBRICANT CIMSTAR 40
OR EQUIVALENT APPROVED BY CORNELL LEPP

TECHNICAL RESOURCE APPROVALS REQUIRED BEFORE FABRICATION			
	OK	DATE	N/A
DRAFTING (O'Connell):			
MACHINE SHOP (Kaminski):			
CHEMISTRY (Conklin):			
ELECTRONICS SHOP (Barley):			
FURNACE BRAZING (Sherwood):			
BEAM WELDING (Sears):			
WELDING OTHER (Gallagher):			
UTILITIES INTEGRATION (Gallagher):			
STOCKROOMS (Lockwood):			

	ITEM	DWG. NO.	DESCRIPTION			G1	G2	G3	REMARKS	REV.
						QUANTITY				
	PRINT DISTR.	PLOT DATE: 12/11/2007 CAD FILE NAME: 7102-071.idw								
	7102-071 SH. NO. 20 OF 20	CR-1	UNLESS OTHERWISE SPECIFIED: DIMENSIONS ARE IN INCHES: TOLERANCES ON: 0.0 ± .02 0.00 ± .01 0.000 ± .005 FRACTIONS ± 1/64 ANGLES ± 0.5° ALL SURFACES ✓		 CORNELL UNIVERSITY LABORATORY FOR ELEMENTARY-PARTICLE PHYSICS		CORNELL UNIVERSITY Floyd R. Newman Laboratory Ithaca, NY 14853			
		ERL INJECTOR CRYOMODULE 5-CELL CAVITY STRING ASSEMBLY FIXTURE GATE VALVE PEDESTAL AT BEAM ENTRANCE, SUB-ASM								
CHECKED BY: PEB/NGV APPROVED BY: PEB/NGV		DRAWN BY JGL	DRAWN FOR P. Barnes	DATE 2/1/2007	SCALE		7102-071 SH. NO. 20 OF 20		REV. A	